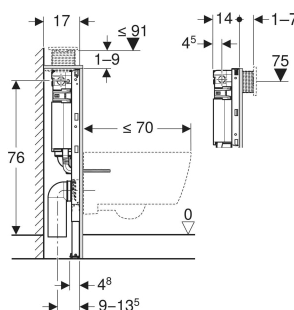
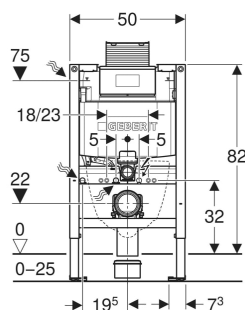


# Geberit Duofix element for wall-hung WC, 82 cm, with Omega concealed cistern 12 cm



## APPLICATION PURPOSES

- For metal and wood frame walls
- For Geberit Duofix system walls
- For installation in part-height prewalls
- For floor constructions 0–25 cm
- For wall-hung WCs

## CHARACTERISTICS

- 2025 range
- Statically self-supporting frame, protected against corrosion with powder coating
- Frame for wall-hung WCs with connection dimensions as per EN 33 and projection up to 70 cm
- Frame with  $\varnothing 9$  mm drilling holes for fastening in wood frame construction
- Rotating foot plates, suitable for installation in U profiles UW 50 and UW 75
- Foot plates that can be mounted in Geberit Duofix system rail without tools, without additional components
- Galvanised non-slip leg supports protected against corrosion
- Connection bend can be mounted without tools at different depths, adjustable range 45 mm
- Geberit Omega concealed cistern 12 cm, fully insulated against condensation
- Cistern fulfils standard requirements in accordance with EN 14055, Class II

- For top or front actuation, suitable for dual flush
- Immediate post flush possible with factory setting
- Tool-free installation and maintenance work on concealed cistern
- Water supply connection on the left or rear left
- Protection box for service opening, can be cut to length, protects against moisture and dirt
- With conduit pipe for feed pipe for Geberit AquaClean shower toilets and for connection cable
- Fastening for electrical connection and Power & Connect Box

## TECHNICAL DATA

Flow pressure	0.1–10 bar
Water temperature max.	25 °C
Flush volume, factory setting	5.8 / 3 l
Flush volume large, adjustment range	4 / 4.5 / 6 / 7.5 l
Flush volume small, adjustment range	2–4 l
Flow rate at 300 kPa / 3 bar	0.16 l/s
Minimum flow pressure	0.1 bar
Calculated flow rate	0.09 l/s
Product material	Steel
Height-adjustable	Yes

## SCOPE OF DELIVERY

- Water supply connection R 1/2", compatible with MasterFix and MeplaFix, with integrated angle stop valve and hand wheel
- Protection box for service opening
- 2 wall anchors
- Connection set for WC,  $\varnothing 90$  mm
- Connection bend 90° made of PE-HD,  $\varnothing 90$  mm
- Adaptor socket made of PE-HD,  $\varnothing 90 / 110$  mm
- 245.746.00.1 - Pull Disc f flV Type 212
- Fastening and protection material

## ACCESSORIES

- Geberit set of Power & Connect box and power supply unit for element for wall-hung WC
- Geberit Duofix set of wall anchors for single and system installation
- Geberit Duofix set of wall anchors for single installation, corner construction
- Geberit Duofix set of wall anchor extensions
- Geberit Duofix system fastening bracket
- Geberit Duofix set of foot fastener on rear wall
- Geberit set of support brackets for WC ceramic appliances with small contact surfaces
- Geberit sound insulation set for wall-hung WC
- Geberit Duofix set of foot extensions 20 cm length

- Geberit drilling template for wall-hung WC and Geberit AquaClean

Art. no.	B cm	H cm	T cm
111.004.00.4	50	82	14