



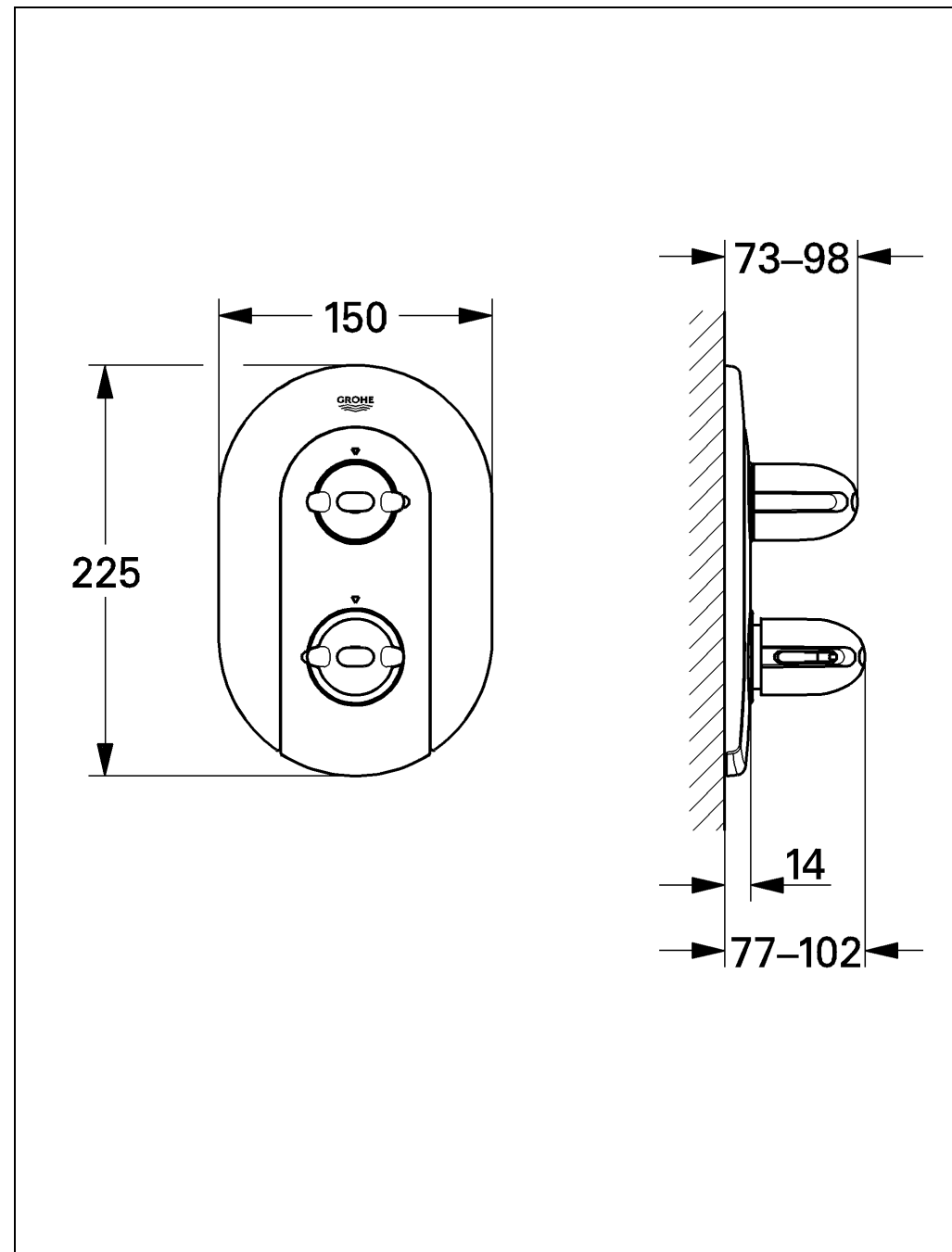
WATER TECHNOLOGY

## Grohtherm 3000

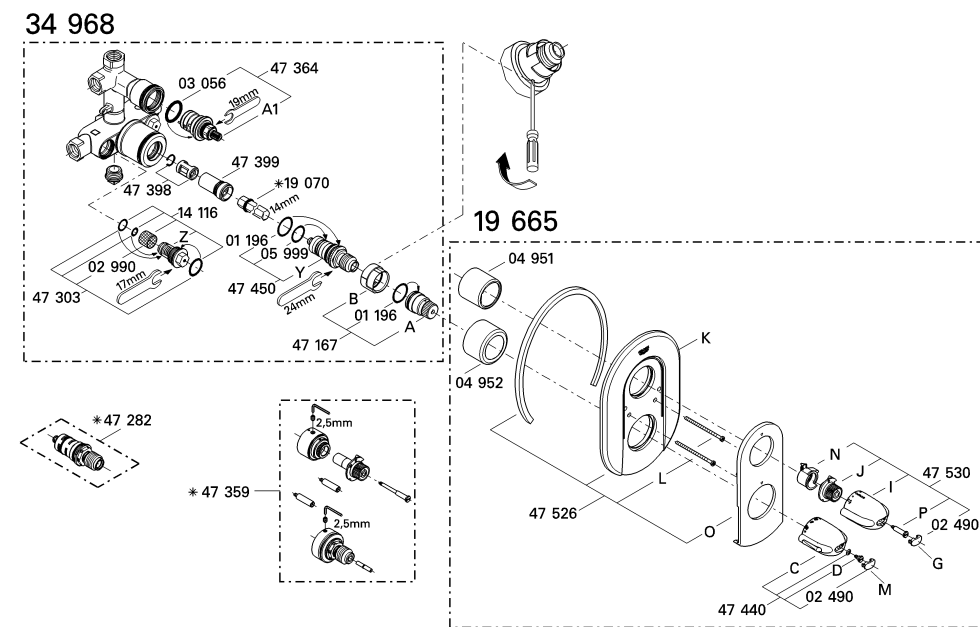


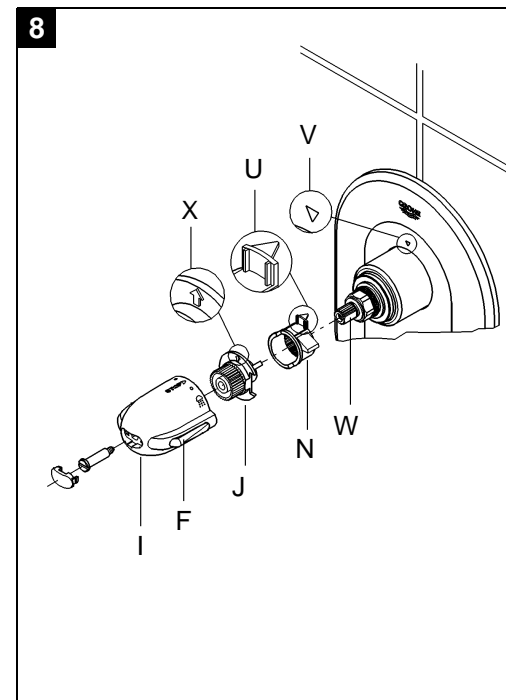
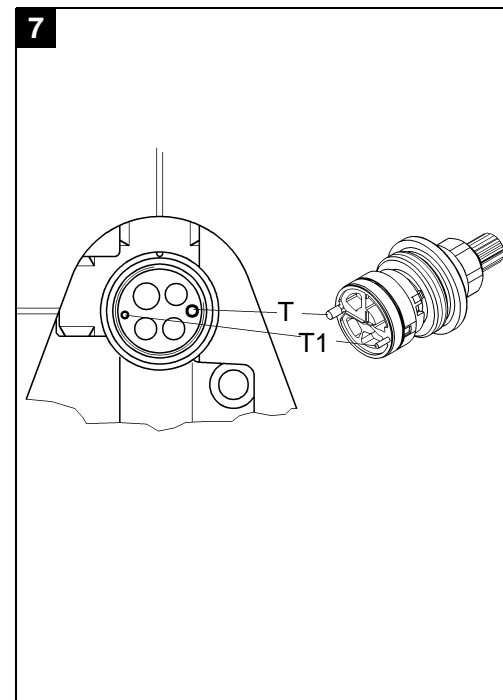
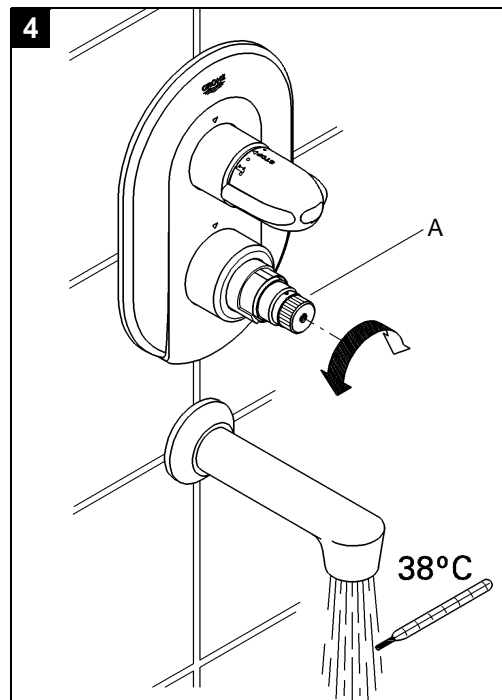
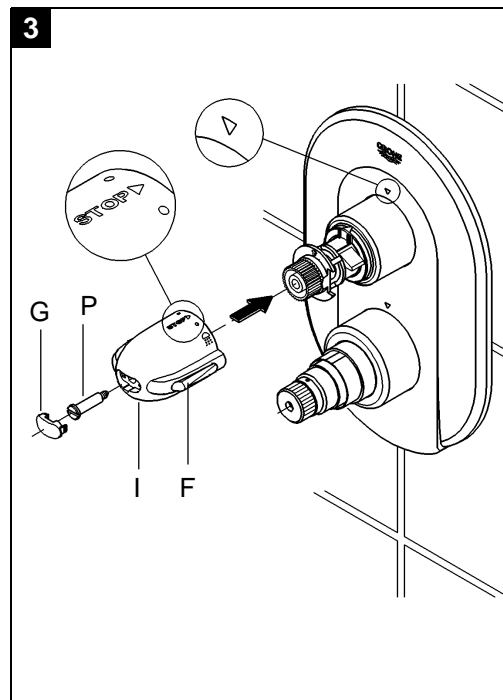
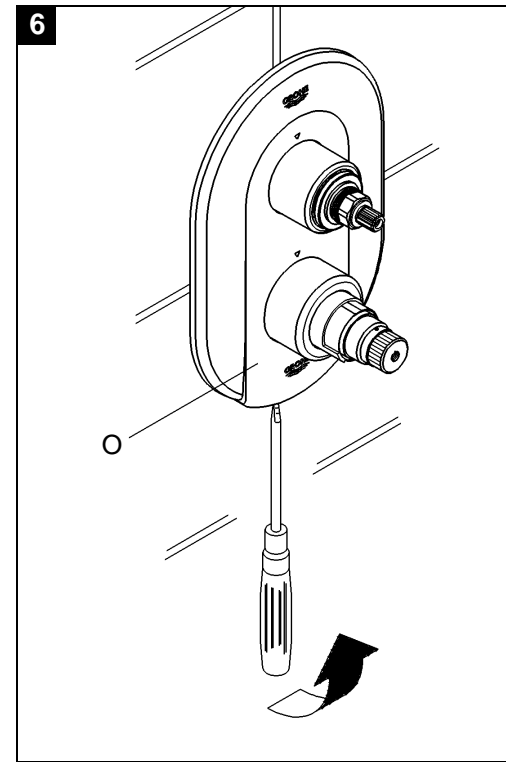
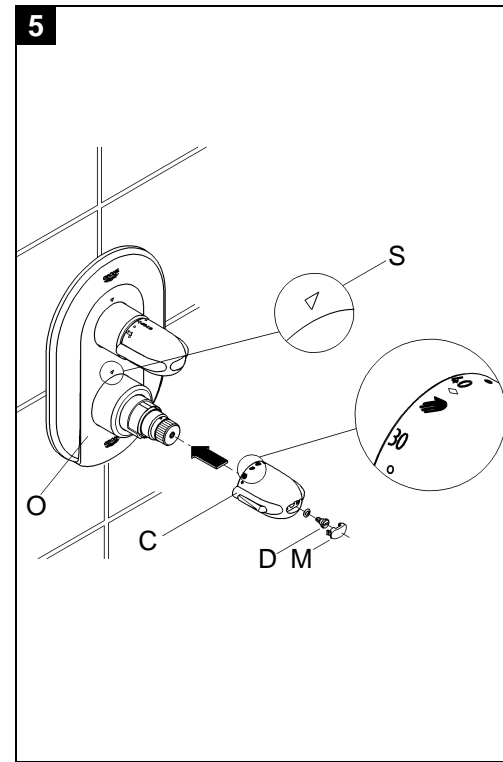
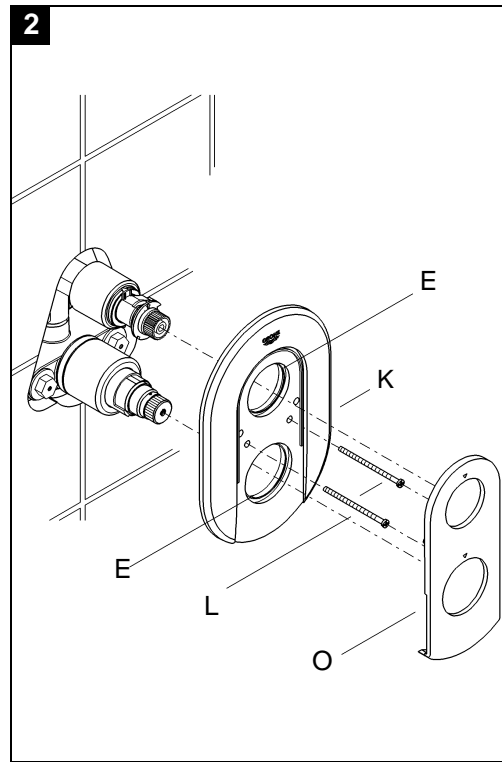
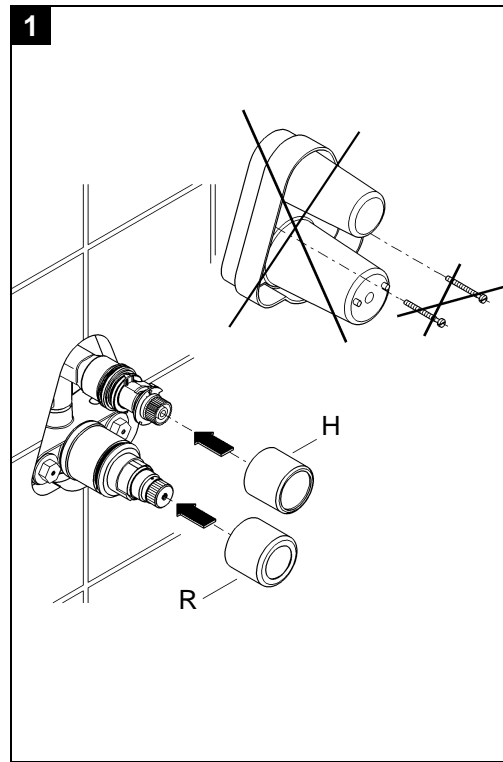
19 665

**D** Seite ..... 1 **I** Pagina...5 **N** Side ..... 9 **GR** Σελίδα.13 **TR** Sayfa ..... 17  
**GB** Page ..... 2 **NL** Pagina...6 **FIN** Sivu .... 10 **CZ** Strana .14 **RUS** Страница . 18  
**F** Page ..... 3 **S** Sida.....7 **PL** Strona. 11 **H** Oldal ...15 **SK** Strana..... 19  
**E** Página .. 4 **DK** Side.....8 **UAE** الصفحة 12 **P** Página.16



Bitte diese Anleitung an den Benutzer der Armatur weitergeben!  
Please pass these instructions on to the end user of the fitting.  
S.v.p remettre cette instruction à l'utilisateur de la robinetterie!





**GB**

**Installation**

- Plaster and tile the wall, excluding the area occupied by the mounting template. Seal any apertures in the wall so that they are watertight to spray water.
  - Tiles laid in mortar should be pointed so that the joint is tapered towards the outside.
  - Seal prefabricated walls with a permanently plastic compound.
- Remove the mounting template, see fig. [1].
- Screw-mount sleeve (H) and (R), see fig. [1].
- Grease the seals (E) of the escutcheon (K) with the special grease supplied and install escutcheon (K) with screws (L), see fig. [2].
- Fit the cap (O), see fig. [2].

**If the thermostat has been installed at too great a depth**, this can be adjusted by 27.5mm with an extension set (see Replacement Parts, fold-out page I, ref. No. 47 359).

**Reversed union** (hot on right - cold on left).  
Replace thermoelement (Y), see replacement parts fold-out page I, ref. No.: 47 282 (1/2").

**Installation of the shut-off knob (I)**, see fig. [3].

- Reinstall shut-off knob (I) with economy button (F) pointing to the right.
- Reinstall screw (P) and refit cap (G).

**Shut-off knob (I) operation.**

Shut-off knob in central position	= closed
Shut-off knob clockwise	= discharge from spout
Shut-off knob anti-clockwise	= discharge from shower

[Press button (F)]

**Adjustment**

**Installation of the thermostat knob and temperature adjustment**, see figs. [4] and [5].

- Before the mixer is put into service if the mixed water temperature measured at the point of discharge varies from the specified temperature set on the thermostat.
  - After any maintenance operation on the thermoelement.
1. Open the shut-off valve and check the temperature of the water with a thermometer, see fig. [4].
  2. Turn the adjusting nut (A) clockwise or anticlockwise until the water temperature reaches 38 °C, see fig. [4].
  3. Reinstall the thermostat knob (C) in such a way that the 38 °C mark (◊) on the knob coincides with the mark (S) on the cap (O).
  4. Reinstall screw (D) and refit cap (M), see fig. [5].

**Temperature limitation**

The safety stop limits the temperature range to 38 °C.

If a higher temperature is desired, the 38 °C limit can be overridden by depressing the temperature control handle.

**Prevention of frost damage**

When the domestic water system is drained, thermostat mixers must be drained separately, since non-return valves are installed in the hot and cold water connections.

The complete thermostat assemblies and non-return valves must be unscrewed and removed.

**Maintenance**

For maintenance, see figs. [6], [7], [8] and fold-out page I.

**Shut off hot and cold water supplies.**

**I. Thermoelement**

1. Lever out cap (M).
2. Unscrew and remove (D) and pull off thermostat knob (C).
3. Unscrew and remove adjusting nut (A).
4. Pull off stop ring (B).
5. With a 24mm open-ended spanner, unscrew and remove thermoelement (Y).

**II. Non-return valve**

1. Lever out cap (M) and (G).
2. Unscrew and remove screws (D) and (P), pull off thermostat knob (C) and shut-off knob (I).
3. Detach cap (O) in accordance with fig. [6].
4. Remove screws (L) and escutcheon (K).
5. Unscrew and remove non-return valve (Z) with 17mm socket wrench.

**III. Aquadimmer**

1. Proceed as for maintenance of non-return valve, points 1-4.
2. Remove splined adapter (J) and economy stop (N).
3. With a 19mm open-ended spanner, unscrew and remove aquadimmer (A1).

Reassemble in the reverse order.

**Observe the correct mounting position**, see figs. [7] and [8].

1. The various pins (T) and (T1) must project into the relevant apertures in the race, see fig. [7].
2. Fit stop (N) so that arrow (U) coincides with marking (V) on the cap, see fig. [8].
3. Turn isolating valve of the aquadimmer so that face (W) points to the top, see fig. [8].
4. Fit and turn splined adapter (J) so that arrow (X) coincides with marking (V) on the cap.
5. Fit flow shut-off knob (I), making sure that button (F) faces the right.

Inspect and clean all parts, replace if necessary and grease with special valve grease (ref. No. 18 012).

Reassemble in the reverse order.

Use only genuine **Grohe** replacement parts.

**Replacement parts**, see fold-out page I (\* = special accessories).

Readjustment is necessary after every maintenance operation on the thermoelement (see Adjustment).

**Care**

For directions on the care of this thermostat mixer, please refer to the accompanying Care Instructions.