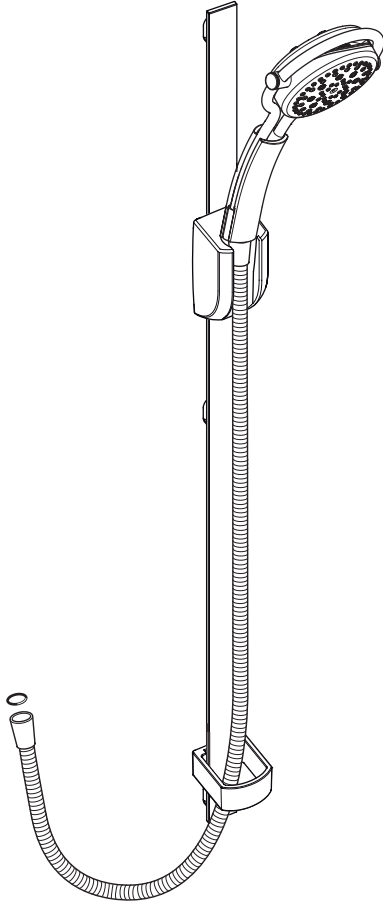


mira

SHOWERS



MIRA 360 MAGNETIC FITTINGS KIT

Installation and User Guide

These instructions are to be left with the user

CONTENTS

Patents and Design Registration.....	2
Patent Applications:.....	2
Design Registration:.....	2
Introduction	3
Important Safety Information	3
Pack Contents	4
Dimensions	5
Specifications	5
Pressures	5
Flow Rates	6
Installation Requirements	6
Operation	7
Installation	8
Fault Diagnosis.....	12
Maintenance.....	12
Cleaning	12
Cloud LC Spray Plate Assembly	14
Spares	14
Spares	15
Customer Service	16

Patents and Design Registration

Patent Applications:

UK: 0715612.8, 0804172.5

World: PCT/GB2008/002703

Design Registration:

Europe: 001004022

INTRODUCTION

Thank you for purchasing a quality Mira product. To enjoy the full potential of your new product, please take time to read this guide thoroughly, having done so, keep it handy for future reference.

Mira 360 Magnetic Fittings Kit With 360i Showerhead

An adjustable spray showerhead with four different spray actions (Rain, Storm, Burst and Cloud), supplied complete with flexible hose, magnetic clamp bracket assembly, magnetic slide bar assembly and hose retaining ring.

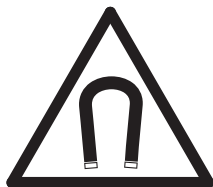
IMPORTANT SAFETY INFORMATION

Warning!

1. Products manufactured by us are safe and without risk provided they are installed, used and maintained in good working order in accordance with our instructions and recommendations.

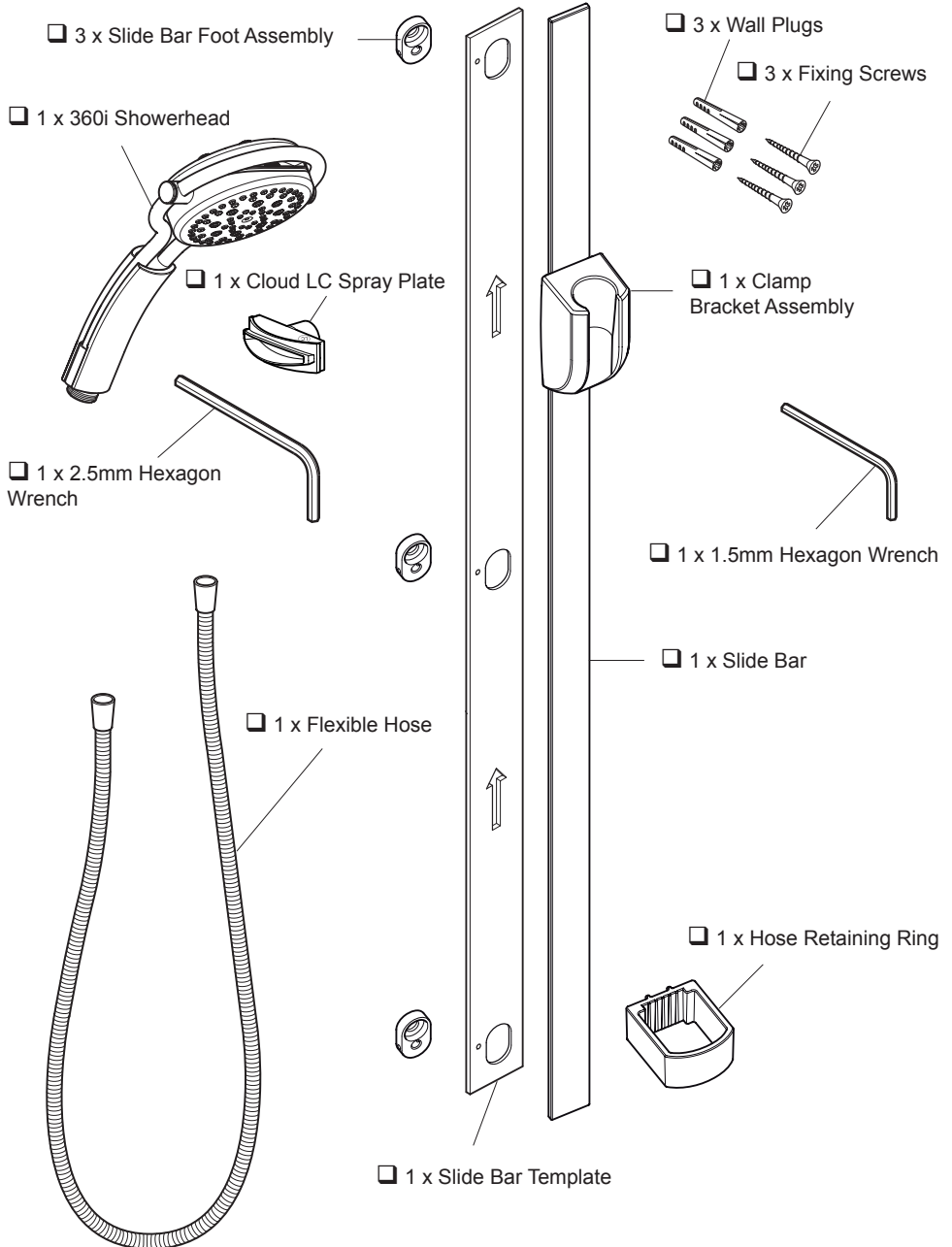
Caution!

1. Read all of these instructions.
2. Retain this guide for later use.
3. Pass on this guide in the event of change of ownership of the installation site.
4. Follow all warnings, cautions and instructions contained in this guide.
5. When this product has reached the end of its serviceable life, it should be disposed of in a safe manner, in accordance with current local authority recycling, or waste disposal policy.
6. This appliance contains magnets. Users fitted with a heart pacemaker or ICD should follow their normal safety precautions for products that contain magnets. The magnets are located in the clamp bracket. There are no magnets in the showerhead.

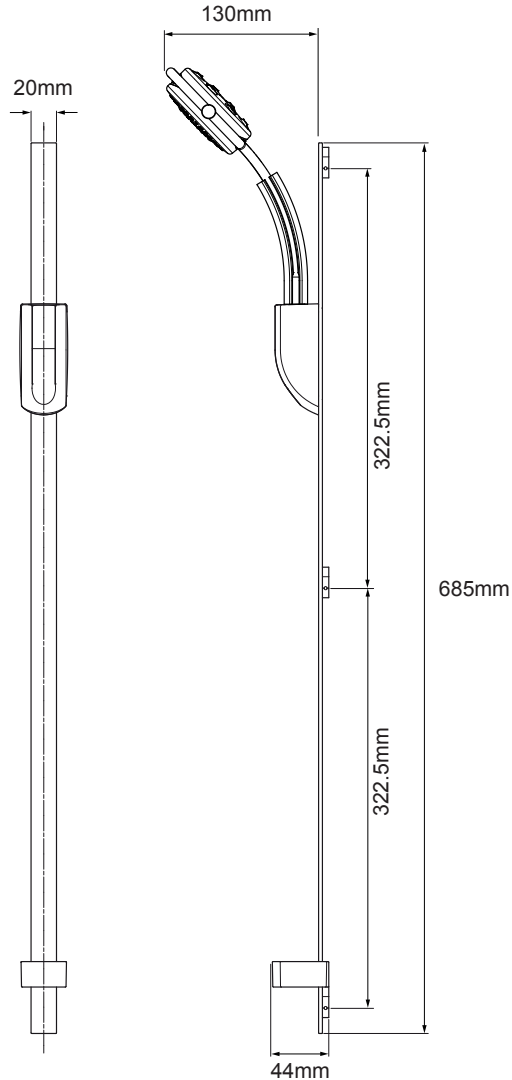


If you experience any difficulty with the installation or operation of your new Shower Fittings, please refer to '**Fault Diagnosis**', before contacting Kohler Mira Ltd. Our contact details can be found on the back cover of this guide.

PACK CONTENTS



DIMENSIONS



SPECIFICATIONS

Pressures

Minimum maintained pressure: **10 kPa (0.1 bar)**

Maximum maintained pressure: **500 kPa (5.0 bar)**

Warning! Exceeding the stated maximum maintained pressure could result in excessive spray forces and possible damage to the product.

Flow Rates

The flow rates for the Mira 360i showerhead are listed below.

Spray Pattern	Inlet Pressure 0.5 bar	Inlet Pressure 0.1 bar
Rain	12.3 l/min	5.4 l/min
Storm	11.5 l/min	5 l/min
Burst	7 l/min	3.3 l/min
Cloud	4.2 l/min	
Cloud LC		2.7 l/min

INSTALLATION REQUIREMENTS

Installation must be carried out in accordance with these instructions, and must be conducted by designated, qualified and competent personnel.

1. The hose retaining ring supplied must be used to stop the showerhead from dropping below the spill-over level of the bath or shower tray. This will prevent water supply contamination due to backsiphonage.
2. Installations must comply with UK Water Regulations / Bye-laws (Scotland), and Building and Plumbing Regulations in force at the time of installation.
3. When installing the shower fittings in a cubicle, position with the spray pointing across rather than toward the opening of the cubicle.
4. When installing the shower fittings over a bath, position with the spray pointing down the centre line of the bath.
5. Avoid layouts where the shower hose will be sharply kinked. This may reduce the life of the hose.
6. **Do not** fit any form of flow control in the shower outlet.
7. **Do not** use excessive force when making connections.
8. **Do not** install the fittings in a position where it could become frozen.

This product is supplied configured for the majority of showering systems including electric showers.

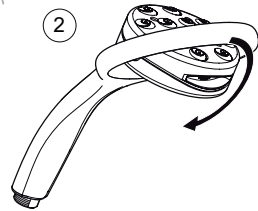
Note! For showers with a pressure of below 0.15 bar (1.5 metre head) it will be necessary to change the Cloud sprayplate assembly for the LC (Low Capacity) version to achieve a suitable spray pattern, Refer to section: '**Maintenance Cloud LC Spray Plate Assembly**'.

Caution! The LC Cloud sprayplate **must** not be used on electric showers

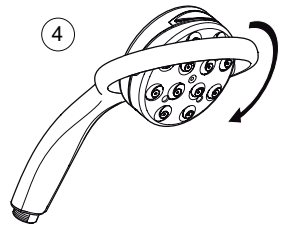
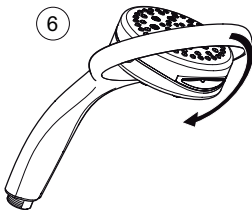
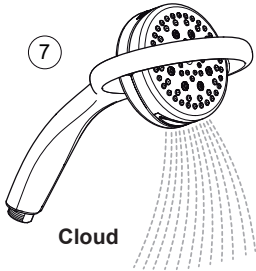
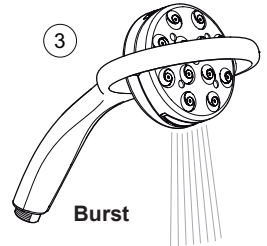
OPERATION

Changing Spray Settings

Turn the showerhead in the direction shown to activate the different spray patterns.



With **Flipstream** Technology
1 flip action, 4 unique sprays



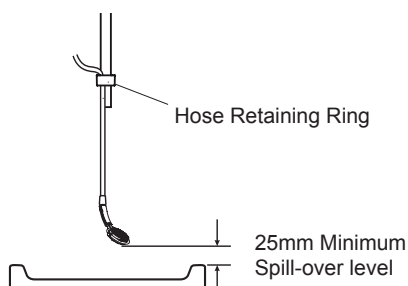
INSTALLATION

Note! For dry lined, stud partition, shower cubicle or laminated panel walls the installer may wish to obtain alternative proprietary cavity fixings. Use of these alternative fixings is beyond the scope of this guide.

Read the section: **Installation Requirements** before proceeding with the installation.

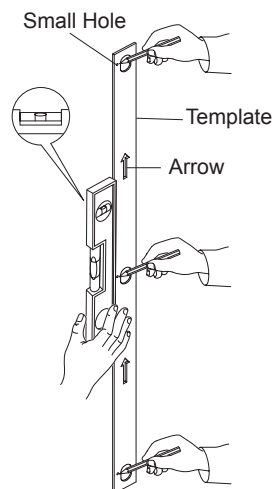
The slide bar should be positioned to one side of the shower control at a convenient height for all the family. It should be positioned so that the showerhead discharges down the centre line of the bath, or across the opening of the shower cubicle. The showerhead should be directed away from the shower control.

1. Decide on a suitable position for the slide bar avoiding buried cables and pipes. Make sure that when the hose retaining ring is placed on the lowest position on the slide bar there is a minimum of 25mm between the showerhead and bath/tray spill-over level. This is necessary to prevent back-siphonage.



2. Hold the slide bar template against the wall, make sure that the template is vertical and that the arrows on the template are pointing upwards.
3. Using the small holes as a guide, mark the position of the three fixing holes with a pencil.

Warning! Make sure that there are no buried cables or pipes in the wall before drilling.

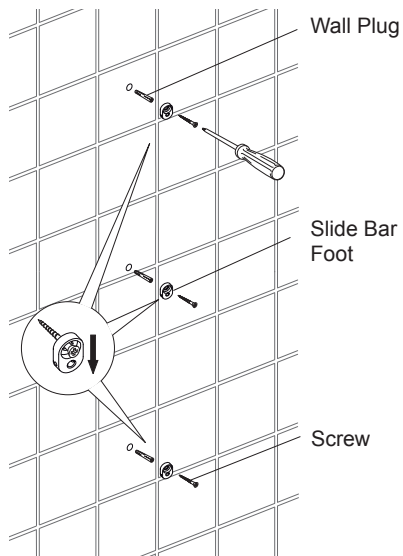


Note! Ensure that drilled holes are on the face of the tiles and not in the grout joints.

4. Remove the template, drill three 6mm holes and insert the wall plugs supplied. (Alternatively use proprietary cavity fixings for dry lined, stud partition, shower cubicle or laminated panel walls).

5. Install and loosely screw the three slide bar feet.

Note! The foot assemblies should hang downwards and must move freely so that they can be aligned in the template.

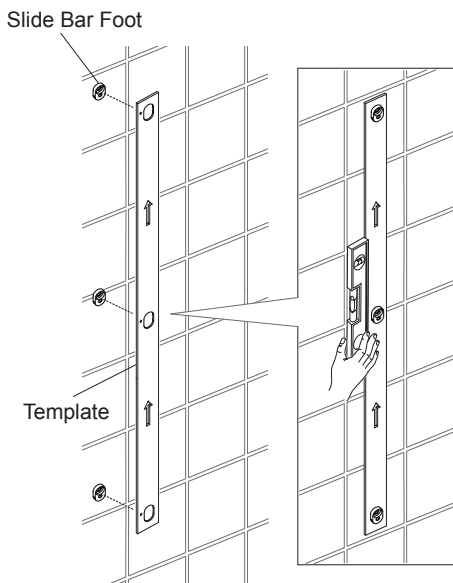


6. Place the template onto the three slide bar feet. Check that the feet are vertically and correctly aligned.

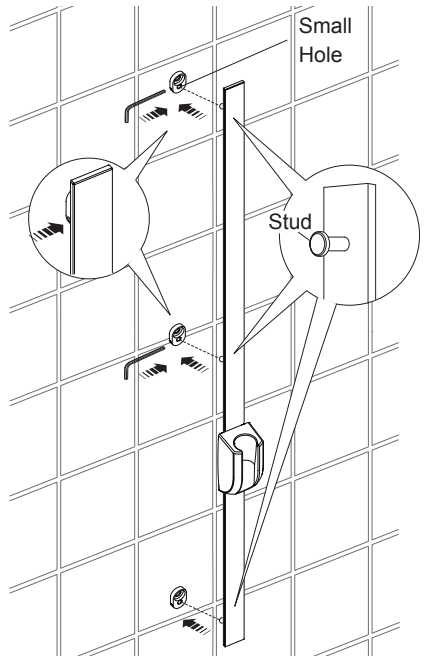
7. Tighten the screws on the three slide bar feet and remove the template.

Note! Do not overtighten the screws.

8. Remove the template.



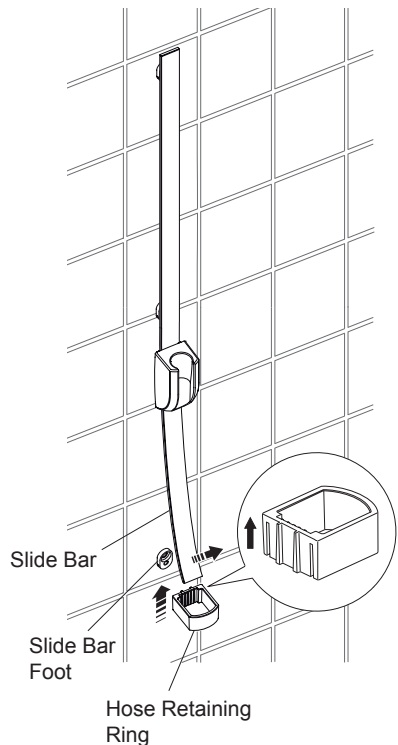
9. Install the 3 studs on the slide bar into the small holes on the slide bar foot assemblies, some slight adjustment may be needed.
10. Using the hexagon wrench tighten the grub screws on the top and middle slide bar feet.



11. Flex the slide bar away from the wall and install the hose retaining ring onto the slide bar.
12. Install the bottom stud on the slide bar into the slide bar foot assembly.

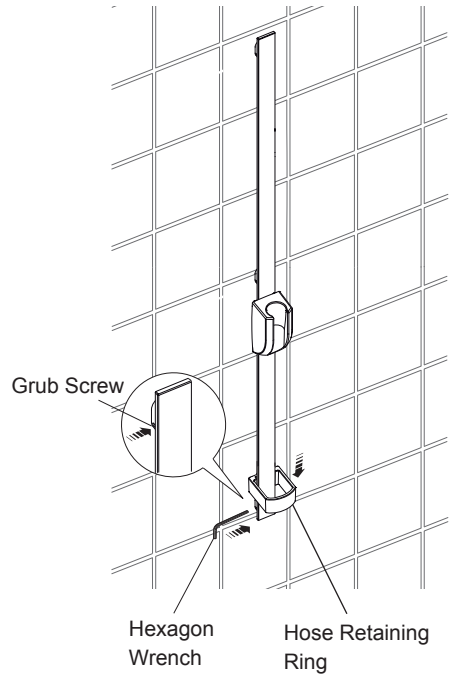
Note! Check the slide bar cannot be moved. If there is movement check the slide bar is fully located onto the slide bar feet.

13. Check that the slide bar is vertical and make any final adjustments.



- Using the hexagon wrench tighten the grub screw on the bottom slide bar foot.

- Gently push the hose retaining ring down the slide bar until it locates on the bottom slide bar foot.

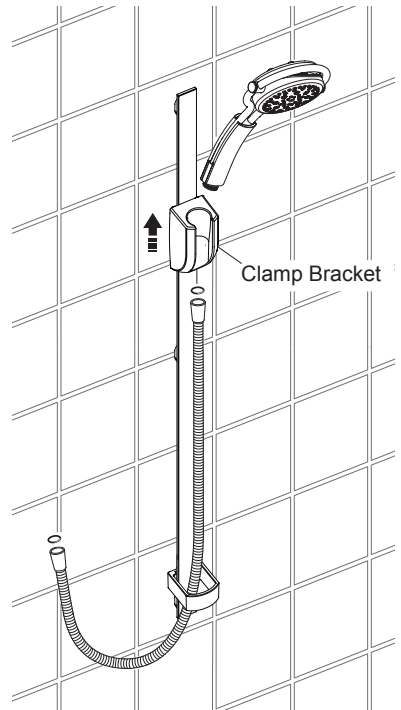


- Carefully place the clamp bracket onto the slide bar.

- Pass the flexible hose through the hose retaining ring.

- Install the hose onto the showerhead and the outlet of the shower control or RAC assembly (Make sure the hose seals are fitted) **Do not overtighten.**

- Place the showerhead onto the clamp bracket assembly.



FAULT DIAGNOSIS

The trouble shooting information tabled below gives details on what you can do as a user, should you encounter difficulties with the shower fittings whilst operating the shower. Before replacing any parts make sure that the underlying cause of the malfunction has been resolved.

Malfunction	Cause	Remedy
No flow or low flow rate from shower fittings.	Spray plate blocked.	Refer to section 'Maintenance, Cleaning' .
	Hose blocked or twisted.	Clear blockage or release twist in hose or renew hose.
	Problem with shower control.	Refer to the shower control Installation and User Guide.
Drip from spray plate assembly in showerhead.	A small amount of water may be retained in the shower fitting after the shower control has been turned off. This may drain over a few minutes.	This is quite normal. Changing the angle of the showerhead may vary the draining time.
Shower temperature changes when spray action is adjusted.	Adjusting the spray action changes the flow of water. This may affect some shower controls and plumbing installations.	To minimise the effect make sure that the spray plate is clean. Refer to section: 'Maintenance, Cleaning' . If the malfunction persists refer to the shower control Installation and User Guide.
Poor spray pattern from the Cloud sprayplate assembly.		Change the Cloud sprayplate for the LC (Low Capacity) version. Refer to section 'Maintenance Cloud LC Spray Plate Assembly'

MAINTENANCE

Cleaning

Many household cleaners contain abrasives and chemical substances, and should not be used for cleaning plated or plastic fittings. These finishes should be cleaned with a mild washing up detergent or soap solution, and then wiped dry using a soft cloth.

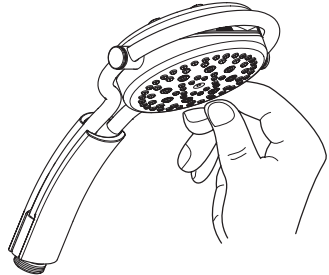
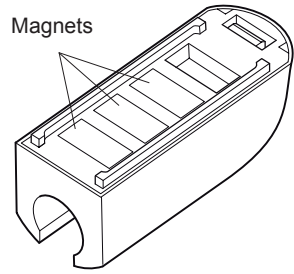
Magnetic Clamp Bracket

1. The clamp bracket is magnetic and may attract magnetic particles that could scratch the slide bar. Take care when handling, and when placing on surfaces other than the slide bar place magnetic side up.

Note! To remove the clamp bracket, slide the clamp bracket to the end of the slide bar and remove.

Note! Care should be taken when placing the clamp bracket onto the slide bar.

2. The magnetic clamp bracket should be cleaned with a mild washing up detergent or soap solution, and then wiped dry using a soft cloth.



Spray Plate Assembly - External

1. Use your thumb or a soft cloth to wipe any limescale from the soft nozzles and the front surface of the showerhead spray plate.

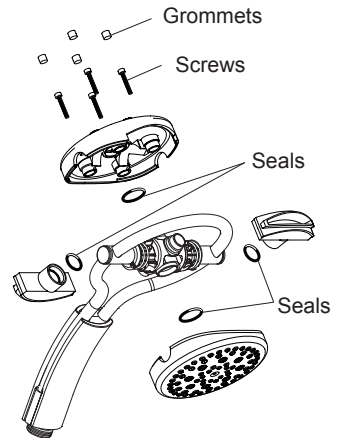
Important! The spray plate must be regularly cleaned to make sure that the showerhead does not become blocked.

Spray Plate Assembly

1. Use a suitable tool to remove the grommets.
2. Using the 2.5mm hexagon wrench (supplied), remove the screws.
3. Separate the sprayplate assembly into its individual components.
4. Clean and replace components as necessary.

Note! Make sure that the seals are located correctly.

5. Reassemble the components in reverse order.

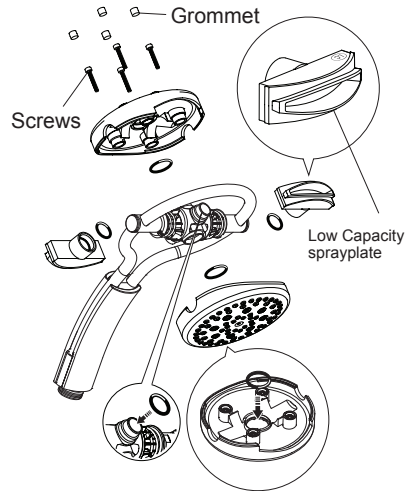


Cloud LC Spray Plate Assembly

1. Use a suitable tool to remove the four grommets.
2. Using the 2.5mm hexagon wrench (supplied), remove the four screws.
3. Separate the sprayplate assembly into its individual components.
4. Replace the Cloud assembly sprayplate with the LC (Low Capacity) version.

Note! Make sure that the seals are located correctly.

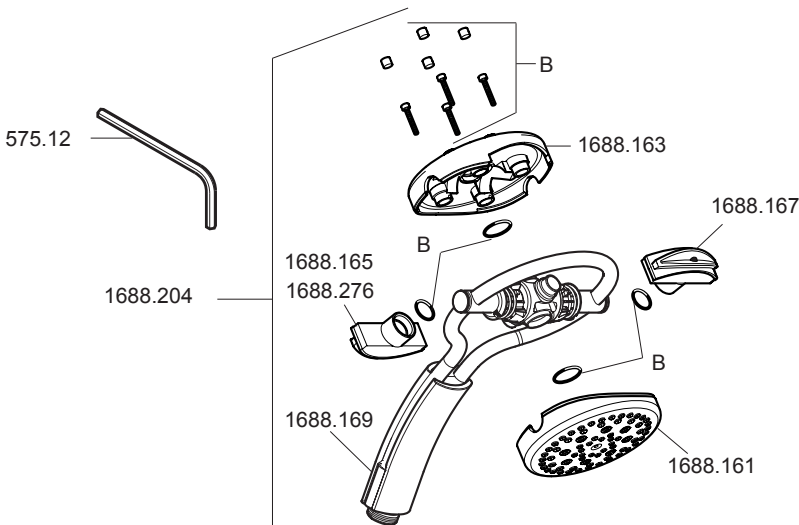
5. Reassemble the components in reverse order.



Replacing the Cloud Sprayplate Assembly

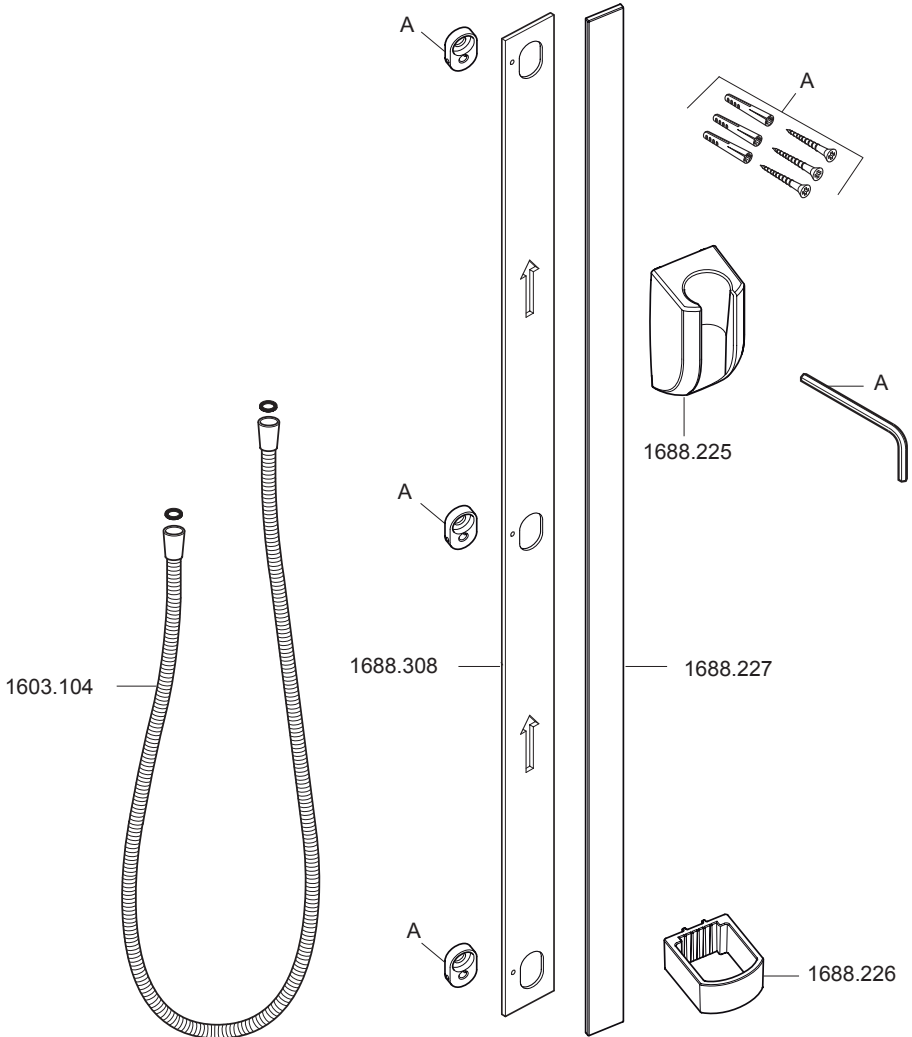
SPARES

575.12	2.5mm Hexagon Wrench
1688.161	Rain Assembly - black
1688.163	Storm Assembly - black
1688.165	Cloud Assembly - black
1688.167	Burst Assembly - black
1688.169	360i Handle
1688.184	Seal & Screw Pack components identified 'B'
1688.204	360i Showerhead
1688.276	Cloud Assembly LC (Low Capacity) - black



SPARES

- 1603.104 Hose
- 1688.225 Magnetic Clamp Bracket
- 1688.226 Hose Retaining Ring
- 1688.227 Magnetic Slide Bar
- 1688.228 Screw Pack Components Identified 'A'
- 1688.307 1.5mm Hexagon Wrench
- 1688.308 Slide Bar Template



CUSTOMER SERVICE

Guarantee of Quality

Mira Showers guarantee your shower fittings against any defect in materials or workmanship for a period of one year from the date of purchase, provided that they are installed and maintained in accordance with the instructions given in this guide.

Within the guarantee period we will resolve defects, free of charge, by repairing or replacing parts or modules as we may choose.

To be free of charge, service work must only be undertaken by Mira Showers or our approved agents.

Service under this guarantee does not affect the expiry date of the guarantee.

The guarantee on any exchanged parts or product ends when the normal product guarantee period expires.

Not covered by this guarantee:

Planned maintenance, or replacement parts required to comply with the servicing requirements of the TMV 2 and TMV 3 healthcare schemes (where applicable).

Damage or defects arising from incorrect installation, improper use or lack of maintenance, including build-up of limescale.

Damage or defects if the product is taken apart, repaired or modified by any persons not authorised by Mira Showers or our approved agents.

This guarantee is in addition to your statutory and other legal rights.

What to do if something goes wrong

If when you first use your shower fittings, they don't function correctly, first contact your installer to check that installation and commissioning are satisfactory and in accordance with the instructions in this manual. We are on hand to offer you or your installer any advice you may need.

Should this not resolve the difficulty, simply contact our Customer Services Team who will give every assistance and, if necessary, arrange for our service engineer to visit. If the performance of your shower declines, consult this manual to see whether simple home maintenance is required. Please call our Customer Services Team to talk the difficulty through, request a service under guarantee if applicable, or take advantage of our comprehensive After-Sales service.

As part of our quality and training programme calls may be recorded or monitored.

Our Customer Services Team is comprehensively trained to provide every assistance you may need: help and advice, spare parts or a service visit.

Spare Parts

We maintain an extensive stock of spares and aim to provide support throughout the product's expected life.

Genuine Mira spares can be purchased direct from Customer Services or from approved stockists or merchants (locations on request).

Spare parts will normally be despatched within two working days. Payment can be made using most major Credit or Debit cards at the time of ordering. Should payment by cheque be preferred, a pro-forma invoice will be sent.

All spares are guaranteed for 12 months from the date of purchase. Spares that have been supplied directly from us can be returned within one month from the date of purchase, providing that they are in good order and the packaging is unopened.

Note! Returned spares will be subject to a 15% restocking charge and authorisation must be obtained before return. Please contact our Customer Services Team.

Note! In the interests of safety, spares requiring exposure to mains voltages should only be fitted by competent persons.

Service / Repairs

Our Service Force is available to provide a quality service at a reasonable cost. You will have the assurance of a Mira trained engineer/agent, genuine Mira spare parts and a 12 month guarantee on the repair.

Payment should be made directly to the engineer/agent who will accept most major Credit or Debit cards or a cheque supported by a banker's card.

To Contact Us

England, Scotland, Wales and Northern Ireland

Mira Showers Customer Services

Telephone: 0870 241 0888

E-mail: technical@mirashowers.com

Fax: 01242 282595

By Post: Cromwell Road, Cheltenham, Gloucestershire, GL52 5EP

Eire

Modern Plant Ltd (Dublin)

Telephone: 01 459 1344

E-mail: sales@modernplant.ie

Fax: Dublin 01 459 2329

Post: Otter House, Naas Road, Clondalkin, Dublin 22



Mira is a registered trade mark of
Kohler Mira Limited.

The company reserves the right to alter
product specifications without notice.

www.mirashowers.co.uk

mira
SHOWERS



FM 14648